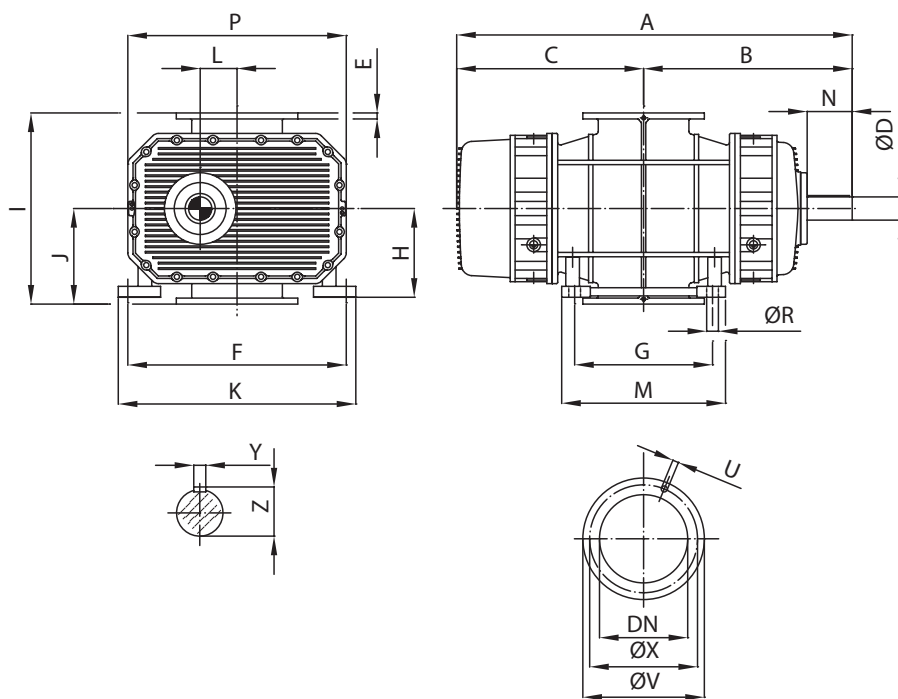




A i r m o v i n g

DIMENSIONI D'INGOMBRO SERIE RL_BS

RL_BS SERIES
OVERALL DIMENSIONS



Tipo Type	DN	A	B	C	ØD*	E	F	G	H	I	J	K	L	M	N	P	ØR	Ø	N°	Øv	Øx	γ**	z	Peso Weight Kg
RL1010BS	50	393	193	200	22	14	190	149	149	280	140	240	38	199	46	275	10	14	4	140	110	6	24	51
RL1020BS	50	435	215	220	22	14	190	194	149	280	140	240	38	244	46	275	10	14	4	140	110	6	24	57
RL1040BS	65	480	238	242	22	16	190	239	149	280	140	240	38	289	46	275	10	14	4	160	130	6	24	64
RL1060BS	80	525	260	265	22	12	190	284	149	280	140	240	38	334	46	275	10	18	8	200	160	6	24	76
RL1080BS	80	528	273	255	32	18	230	281	170	340	170	270	46	321	60	330	12	18	4	190	150	10	35	102
RL1100BS	80	574	296	278	32	18	230	326	170	340	170	270	46	366	60	330	12	18	4	190	150	10	35	107
RL1110BS	80	624	321	303	32	18	230	376	170	340	170	270	46	416	60	330	12	18	4	190	150	10	35	116
RL1115BS	100	711	365	346	32	20	230	463	170	340	170	270	46	503	60	330	12	18	4	220	170	10	35	129
RL1116BS	100	574	298	276	38	20	255	335	185	370	185	295	58	375	80	390	14	18	4	210	170	10	41	165
RL1117BS	100	649	335	314	38	20	255	410	185	370	185	295	58	450	80	390	14	18	4	210	170	10	41	190
RL1118BS	150	710	391	369	38	20	255	520	219	440	220	345	58	560	80	390	14	18	8	265	225	10	41	225
RL1120BS	100	684	362	322	48	20	424	310	236	448	224	504	70	386	92	460	18	18	4	210	170	14	51.5	231
RL1150BS	150	844	441.5	402.5	48	20	424	470	236	440	220	504	70	546	92	460	18	18	8	26	225	14	51.5	275
RL1200BS	200	949	494	455	48	20	424	470	236	448	224	504	70	546	92	460	18	18	8	320	280	14	51.5	296
RL1250BS	150	834	444	390	60	20	510	185	240	480	240	570	85	255	115	525	20	18	8	265	225	18	64	392
RL1350BS	200	923	489	434	60	24	510	285	240	540	270	570	85	355	115	525	20	18	8	320	280	18	64	441
RL1400BS	200	1044	549	495	60	24	510	405	240	540	270	570	85	475	115	525	20	18	8	320	280	18	64	466
RL1450BS	200	963	497	466	70	24	630	200	300	600	300	690	108	270	115	660	23	18	8	320	280	20	74.5	612
RL1550BS	250	1136	583	553	70	24	630	374	300	560	280	690	108	458	115	660	23	18	12	375	335	20	74.5	692
RL1600BS	250	1281	656	625	70	24	630	520	300	600	300	690	108	590	115	660	23	18	12	375	335	20	74.5	770
RL1650BS	250	1210	645	565	85	24	800	266	350	708	354	870	135	370	165	800	27	18	12	375	335	22	90	1075
RL1750BS	300	1448	764	684	85	22	800	505	350	700	350	870	135	600	165	800	27	23	12	445	395	22	90	1350
RL1800BS	300	1630	855	775	85	24	800	687	400	800	400	870	135	782	165	800	27	23	12	440	395	22	90	1650
RL1900BS	300	1583	843	740	100	24	970	430	475	950	475	1060	167	595	210	964	30	23	12	440	395	28	106	2000
RL2100BS	300	2000	1018	882	100	24	970	780	475	950	475	1060	167	955	210	964	30	23	12	440	395	28	106	2500
RL2125BS	400	2345	1223	1122	100	32	970	1130	475	850	425	1060	167	1330	210	980	32	27	16	565	515	28	106	2990
RL2200BS	500	2146	1178	969	120	32	1330	365	590	1120	560	1430	225	526	275	1360	38	27	12	670	620	32	127	4400
RL2250BS	600	2530	1370	1160	110	32	1330	750	590	1120	560	1430	225	910	275	1360	38	30	12	780	725	28	116	5500

*Tolleranza di lavorazione albero / Shaft tolerance up to: < Ø50 ISO i6 > Ø50 ISO m6

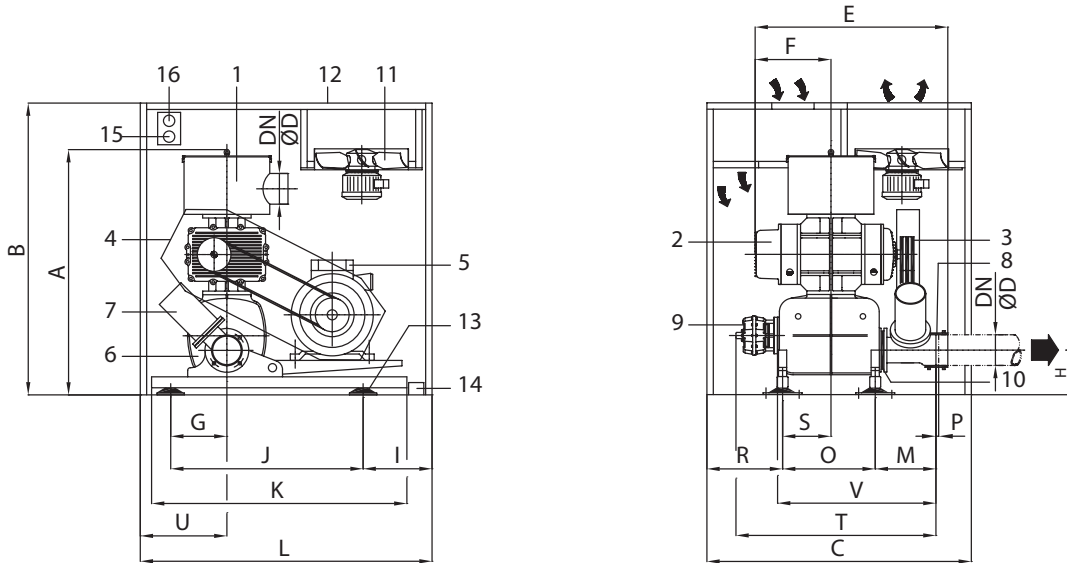
**Dimensioni chiave / Fitting key as per: DIN 6885

Dimensioni in mm. soggette a modifiche senza preavviso / Dimensions in mm. subject to modifications without prior notice.

DIMENSIONI D'INGOMBRO GRUPPI RL_KC

RL_KC UNITS
OVERALL DIMENSIONS

RL



Denominazione	Pos. / Part.	Description
Filtro silenziatore d'aspirazione	1	Inlet silencer filter
Soffiante a lobi serie RL	2	RL Rotary lobe blower
Cinghie e pulegge	3	Pulleys and belts
Carter di protezione	4	V-belt guard
Motore di azionamento	5	Drive motor
Silenziatore autoportante	6	Base silencer
Valvola di sicurezza	7	Safety valve
Manicotto flessibile	8	Flexible hose
Valvola d'avviamento	9	Start up valve
Valvola di ritegno (opzione)	10	Inlet check valve (option)
Ventilatore	11	Fan
Cabina insonorizzante	12	Noise enclosure
Antivibranti	13	Antivibration pads
Ingresso cavi	14	Wires door
Manometro	15	Manometer
Controllo intasamento filtro	16	Filter vacuum control



Tipo	DN	ØD*	A	B	C	E	F	G	H	I	J	K	L	M	O	P	R	S	T	U	V	**Peso-Kg
Type																						**Weight-Kg
RL1010KC	50	60	810	960	850	533	200	134	135	205	430	675	850	183	280	15	265	130	703	274	533	90
RL1020KC	50	60	810	960	850	533	220	134	135	205	430	675	850	183	280	15	265	130	703	274	533	100
RL1040KC	80	89	810	960	850	597	245	134	135	205	430	675	850	202	280	15	265	130	722	274	597	130
RL1060KC	80	89	925	1250	1100	639	265	155	165	193	635	931	1200	210	409	15	335	245	866	355	639	140
RL1080KC	80	89	985	1250	1100	629	255	155	165	240	635	977	1200	210	409	15	335	245	866	355	629	220
RL1100KC	80	89	985	1250	1100	652	278	155	165	240	635	977	1200	210	409	15	335	245	866	355	652	235
RL1110KC	80	89	985	1250	1100	677	303	155	165	240	635	977	1200	210	409	15	335	245	866	355	677	250
RL1115KC	100	114	1055	1250	1100	767	346	213	180	325	725	1112	1200	241	465	15	335	285	957	373	767	275
RL1116KC	100	114	1085	1250	1100	697	276	213	180	344	725	1131	1200	241	465	15	335	285	957	373	697	310
RL1117KC	100	114	1085	1250	1100	735	314	213	180	344	725	1131	1200	241	465	15	335	285	957	373	735	335
RL1120KC	100	114	1163	1250	1100	445	324	213	180	344	725	1131	1200	241	165	15	335	285	957	373	745	375
RL1118KC	150	168	1350	1600	1450	907	369	300	245	252	1015	1342	1600	335	508	15	415	305	1120	475	907	510
RL1150KC	150	168	1350	1600	1450	942	404	300	245	252	1015	1342	1600	335	508	15	415	305	1120	475	942	560
RL1250KC	150	168	1390	1600	1450	928	390	300	245	252	1015	1342	1600	335	508	15	415	305	1120	475	928	675
RL1200KC	200	219	1586	1850	1600	1115	455	273	270	327	1055	1522	1700	365	690	15	360	395	1305	495	1115	690
RL1350KC	200	219	1650	1850	1600	1095	435	273	270	327	1055	1522	1700	365	690	15	360	395	1305	495	1095	745
RL1400KC	200	219	1650	1850	1600	1155	495	273	270	327	1055	1522	1700	365	690	15	360	395	1305	495	1155	790
RL1450KC	200	219	1715	1850	1600	1128	468	273	270	327	1055	1522	1700	365	690	15	530	395	1305	495	1128	915
RL1550KC	250	273	1963	2120	1950	1406	554	331	360	408	1220	1753	2050	412	785	22	530	345	1577	660	1406	1625
RL1600KC	250	273	1963	2120	1950	1479	627	331	360	408	1220	1753	2050	412	785	22	530	345	1577	660	1479	1695
RL1650KC	250	273	2100	2120	1950	1417	565	331	360	408	1220	1753	2050	412	785	22	530	345	1577	660	1417	2000
RL1750KC	300	324	2100	2200	2195	1648	685	337	245	685	965	1807	2195	441	1025	22	535	503	1765	695	1648	2300

* diametro esterno tubazione / discharge pipe outer diameter - ** motore e cabina esclusi / motor and hood excluded

TABELLA PRESTAZIONI

FUNZIONAMENTO IN COMPRESSIONE

PERFORMANCES TABLE

PRESSURE OPERATION



Δp mbar	Modello / Model		RL1010K / DN. 50							RL1020K / DN. 50								
	Motore r.p.m. motor		3000							3000								
	soffiante r.p.m. blower		1800	2300	2800	3200	3600	4000	4300	4600	1800	2300	2800	3200	3600	4000	4300	4600
200	Q _v	m ³ /h	46	70	94	113	132	151	165	179	70	110	149	181	213	244	268	292
	Δ t	°C	23	20	19	19	19	19	19	18	26	21	19	19	19	20	20	20
	P. abs	kW	0.8	0.9	1	1.1	1.2	1.3	1.3	1.4	0.9	1.3	1.5	1.6	1.8	1.9	2	2.1
	P.motor	kW	1.5	1.5	1.5	1.5	1.5	2.2	2.2	2.2	1.5	2.2	2.2	2.2	2.2	3	3	3
	Lp (A)	s / c	66	68	72	75	77	81	83	84	69	74	76	79	80	83	86	87
	Lp (A)	c / c	64	65	66	67	67	68	68	69	65	65	67	67	68	68	68	68
300	Q _v	m ³ /h	38	62	85	104	123	142	156	170	49	91	131	163	196	228	252	276
	Δ t	°C	44	36	32	31	31	30	30	29	43	36	33	32	31	31	31	30
	P. abs	kW	0.9	1.1	1.3	1.5	1.6	1.8	1.9	2	1	1.7	2	2.2	2.4	2.7	2.8	3
	P.motor	kW	1.5	1.5	2.2	2.2	2.2	2.2	3	3	1.5	2.2	3	3	4	4	4	4
	Lp (A)	s / c	66	69	73	75	77	81	83	84	69	72	76	80	80	83	87	88
	Lp (A)	c / c	64	65	66	67	67	68	68	69	65	65	67	67	68	68	68	68
400	Q _v	m ³ /h	28	52	76	95	114	133	148	162	40	82	121	153	185	216	240	264
	Δ t	°C	64	53	47	44	44	43	42	40	71	54	46	44	43	43	42	40
	P. abs	kW	1.1	1.3	1.6	1.8	2.1	2.3	2.4	2.6	1.2	2.3	2.6	2.9	3.2	3.5	3.7	3.9
	P.motor	kW	1.5	2.2	2.2	3	3	3	4	4	1.5	3	4	4	4	5.5	5.5	5.5
	Lp (A)	s / c	66	70	73	76	77	82	83	85	70	72	76	81	81	84	89	90
	Lp (A)	c / c	64	65	66	67	67	68	68	69	65	65	67	67	68	69	70	70
500	Q _v	m ³ /h	20	44	67	86	105	124	138	152	68	107	139	170	202	225	249	
	Δ t	°C	94	74	63	58	56	54	53	52	74	63	58	56	54	53	52	
	P. abs	kW	1.4	1.7	2	2.3	2.6	2.9	3.1	3.3	2.7	3.2	3.6	4	4.4	4.7	5	
	P.motor	kW	2.2	2.2	3	3	4	4	4	4	4	4	5.5	5.5	5.5	7.5	7.5	
	Lp (A)	s / c	69	71	78	80	83	85	87	88	74	77	82	84	87	90	90	
	Lp (A)	c / c	65	65	65	65	66	67	70	70	65	67	67	68	69	70	70	
600	Q _v	m ³ /h	33	56	75	93	112	126	140	56	95	127	158	190	213	237		
	Δ t	°C	95	80	74	71	70	68	65	98	81	74	70	67	66	64		
	P. abs	kW	2	2.4	2.8	3.1	3.4	3.7	3.9	3	3.7	4.2	4.7	5.2	5.6	5.9		
	P.motor	kW	3	4	4	4	5.5	5.5	5.5	4	5.5	5.5	7.5	7.5	7.5	7.5		
	Lp (A)	s / c	73	76	80	84	87	90	90	76	78	82	85	88	91	91		
	Lp (A)	c / c	65	65	66	69	70	71	71	65	67	68	69	70	71	71		
700	Q _v	m ³ /h	44	63	81	100	114	128	83	114	145	176	199	222				
	Δ t	°C	100	91	86	82	80	78	99	88	84	82	80	77				
	P. abs	kW	2.8	3.2	3.6	4	4.3	4.6	4.3	4.9	5.4	6	6.4	6.8				
	P.motor	kW	4	4	5.5	5.5	5.5	5.5	5.5	7.5	7.5	7.5	7.5	9.2	9.2			
	Lp (A)	s / c	76	81	85	88	91	91	79	83	85	89	92	92				
	Lp (A)	c / c	65	66	69	70	71	72	65	66	66	70	71	72				
800	Q _v	m ³ /h	71	90	103	117	100	131	163	186	210							
	Δ t	°C	100	96	94	91	110	100	96	94	92							
	P. abs	kW	4.1	4.5	4.8	5.1	5.5	6.1	6.8	7.2	7.7							
	P.motor	kW	5.5	5.5	7.5	7.5	7.5	7.5	9.2	9.2	9.2							
	Lp (A)	s / c	86	90	91	92	84	86	90	91	92							
	Lp (A)	c / c	69	70	71	72	66	67	70	71	72							
900	Q _v	m ³ /h	94	108	148	171	195											
	Δ t	°C	107	105	111	109	108											
	P. abs	kW	5.4	5.8	7.5	8	8.6											
	P.motor	kW	7.5	7.5	9.2	11	11											
	Lp (A)	s / c	92	93	91	92	94											
	Lp (A)	c / c	72	73	71	73	75											
1000	Q _v	m ³ /h																
	Δ t	°C																
	P. abs	kW																
	P.motor	kW																
	Lp (A)	s / c																
	Lp (A)	c / c																

Composizione gas aspirato / Inlet gas composition : aria / air
 Pressione di aspirazione / Inlet pressure = P1 = 1013 ± 50 mbar
 Densità gas / Gas density : MfPc = 1.2 ± 0.1 Kg m³
 Temperatura di aspirazione / Inlet temperature : T1 = 20 °C ± 5 °C

Tolleranza relativa a portata e potenza assorbita /
 Tolerance referred to capacity and absorbed power: ± 5
 Rumorosità a 1m di distanza con tolleranza /
 Noise level at 1m distance with tolerance : ± 2 dB(A)
 Lp (A) = Rumorosità / Noise level; s/c = senza cabina / without enclosure;
 c/c = con cabina / with enclosure

TABELLA PRESTAZIONI

FUNZIONAMENTO IN COMPRESSIONE

PERFORMANCES TABLE

PRESSURE OPERATION

RL



Δp mbar	Modello / Model		RL1040K / DN. 65							RL1060K / DN. 80								
	Motore r.p.m. motor	soffiante r.p.m. blower	3000							3000								
	Q.	m ³ /h	1800	2300	2800	3200	3600	4000	4300	4600	1800	2300	2800	3200	3600	4000	4300	4600
200	Δ t	°C	21	20	19	19	19	20	20	20	32	24	20	18	18	17	17	18
	P. abs	kW	1.4	1.7	2	2.3	2.6	2.8	3	3.2	1.6	2.1	2.5	2.8	3.2	3.5	3.8	4
	P.motor	kW	2.2	2.2	3	3	4	4	4	4	2.2	3	4	4	4	5.5	5.5	5.5
	Lp (A)	s / c	69	73	77	78	80	83	86	87	73	75	78	80	82	84	87	89
	Lp (A)	c / c	65	65	67	67	68	68	68	68	65	65	67	68	68	68	68	69
	Q.	m ³ /h	114	167	220	262	304	347	378	410	148	216	284	338	392	447	487	528
300	Δ t	°C	39	32	29	29	29	30	29	28	53	41	33	29	28	27	27	27
	P. abs	kW	1.9	2.4	2.8	3.2	3.5	3.9	4.2	4.4	2.3	2.9	3.5	4	4.4	4.9	5.3	5.6
	P.motor	kW	3	3	4	4	5.5	5.5	5.5	5.5	3	4	5.5	5.5	5.5	7.5	7.5	7.5
	Lp (A)	s / c	69	74	78	80	81	83	86	87	75	77	79	81	83	85	88	90
	Lp (A)	c / c	65	65	65	67	68	68	68	68	65	65	67	68	68	68	68	69
	Q.	m ³ /h	96	149	201	243	285	327	359	390	123	190	256	310	363	416	456	496
400	Δ t	°C	53	45	41	40	39	40	40	40	63	55	49	45	43	41	40	39
	P. abs	kW	2.4	3.1	3.7	4.1	4.6	5.1	5.5	5.8	2.3	3.7	4.5	5.1	5.7	6.3	6.8	7.2
	P.motor	kW	4	4	5.5	5.5	5.5	7.5	7.5	7.5	4	5.5	5.5	7.5	7.5	9.2	9.2	9.2
	Lp (A)	s / c	70	74	78	80	82	84	86	87	77	78	81	83	85	87	89	91
	Lp (A)	c / c	65	65	65	67	68	68	68	68	65	65	68	68	68	68	68	69
	Q.	m ³ /h	84	137	190	232	274	317	348	380	108	175	241	295	348	401	441	481
500	Δ t	°C	78	64	57	55	54	53	52	51	80	70	61	56	53	50	49	49
	P. abs	kW	2.9	3.6	4.4	5	5.6	6.2	6.7	7.1	3.5	4.4	5.4	6.2	6.9	7.7	8.3	8.9
	P.motor	kW	4	5.5	5.5	7.5	7.5	9.2	9.2	9.2	5.5	5.5	7.5	9.2	9.2	11	11	11
	Lp (A)	s / c	72	75	79	81	83	85	86	88	78	79	82	84	86	88	91	92
	Lp (A)	c / c	65	65	66	67	68	68	68	68	66	68	69	70	70	70	72	73
	Q.	m ³ /h	69	122	175	217	259	302	333	365	93	160	226	280	333	386	426	466
600	Δ t	°C	87	75	70	66	63	62	60									
	P. abs	kW	4.4	5.2	5.9	6.7	7.4	7.9	8.4									
	P.motor	kW	5.5	7.5	7.5	9.2	9.2	11	11									
	Lp (A)	s / c	76	79	81	84	86	87	89									
	Lp (A)	c / c	65	66	67	67	68	68	68									
	Q.	m ³ /h	110	162	204	245	287	319	350									
700	Δ t	°C	108	90	82	78	76	74	72									
	P. abs	kW	5.1	6.1	6.9	7.7	8.5	9.2	9.7									
	P.motor	kW	7.5	7.5	9.2	11	11	11	15									
	Lp (A)	s / c	77	81	82	85	86	88	90									
	Lp (A)	c / c	65	67	67	67	68	68	69									
	Q.	m ³ /h	97	150	192	235	277	308	340									
800	Δ t	°C				101	94	90	87	84								
	P. abs	kW				7.6	8.5	9.5	10.2	10.9								
	P.motor	kW				9.2	11	15	15	15								
	Lp (A)	s / c				83	86	87	89	91								
	Lp (A)	c / c				67	67	68	68	69								
	Q.	m ³ /h				178	220	263	294	326								
900	Δ t	°C																
	P. abs	kW																
	P.motor	kW																
	Lp (A)	s / c																
	Lp (A)	c / c																
	Q.	m ³ /h																
1000	Δ t	°C																
	P. abs	kW																
	P.motor	kW																
	Lp (A)	s / c																
	Lp (A)	c / c																
	Q.	m ³ /h																

Composizione gas aspirato / Inlet gas composition : aria / air
 Pressione di aspirazione / Inlet pressure = P1 = 1013 ± 50 mbar
 Densità gas / Gas density : MfPc = 1.2 ± 0.1 Kg m³
 Temperatura di aspirazione / Inlet temperature : T1 = 20 °C ± 5 °C

Tolleranza relativa a portata e potenza assorbita /
 Tolerance referred to capacity and absorbed power: ± 5
 Rumorosità a 1m di distanza con tolleranza /
 Noise level at 1m distance with tolerance : ± 2 dB(A)
 Lp (A) = Rumorosità / Noise level; s/c = senza cabina / without enclosure;
 c/c = con cabina / with enclosure

TABELLA PRESTAZIONI

FUNZIONAMENTO IN COMPRESSIONE

PERFORMANCES TABLE

PRESSURE OPERATION



Δp mbar	Modello / Model		RL1080K / DN. 80							RL1100K / DN. 80								
	Motore r.p.m. motor	soffiante r.p.m. blower	3000							3000								
			1500	2000	2500	3000	3400	3800	4200	4500	1500	2000	2500	3000	3400	3800	4200	4500
200	Q.	m ³ /h	152	223	295	366	423	480	537	580	210	303	397	490	565	640	715	771
	Δ t	°C	24	21	20	20	20	19	19	19	24	23	21	20	19	19	18	18
	P. abs	kW	1.4	1.8	2.3	2.8	3.1	3.5	3.9	4.2	1.2	2.6	3.2	3.8	4.3	4.7	5.2	5.6
	P.motor	kW	2.2	3	3	4	4	5.5	5.5	5.5	3	4	4	5.5	5.5	7.5	7.5	7.5
	Lp (A)	s / c	69	70	72	74	78	80	83	85	70	71	76	78	82	83	86	88
	Lp (A)	c / c	65	65	65	65	66	66	67	68	65	65	65	66	67	67	70	71
300	Q.	m ³ /h	136	206	277	348	405	461	518	560	190	283	377	470	545	620	695	751
	Δ t	°C	38	32	29	28	28	28	28	28	37	33	31	30	29	29	28	28
	P. abs	kW	1.8	2.5	3.2	3.9	4.4	5	5.5	5.9	2.7	3.6	4.5	5.4	6.1	6.8	7.5	8.1
	P.motor	kW	2.2	4	4	5.5	5.5	7.5	7.5	7.5	4	5.5	5.5	7.5	7.5	9.2	9.2	11
	Lp (A)	s / c	70	71	75	78	80	82	84	87	71	73	78	79	83	84	87	89
	Lp (A)	c / c	65	65	65	66	66	67	68	70	65	65	66	66	67	68	70	71
400	Q.	m ³ /h	124	195	266	337	394	451	507	550	180	272	365	457	531	605	679	734
	Δ t	°C	56	47	43	41	40	39	38	37	53	46	43	42	41	40	36	32
	P. abs	kW	2.4	3.3	4.2	5.1	5.8	6.5	7.2	7.8	3.3	4.4	5.6	6.7	7.7	8.6	9.5	10.2
	P.motor	kW	3	5.5	5.5	7.5	7.5	9.2	9.2	11	4	5.5	7.5	9.2	9.2	11	15	15
	Lp (A)	s / c	71	73	77	79	81	84	86	88	72	74	79	80	83	85	88	90
	Lp (A)	c / c	65	65	65	66	67	68	70	71	65	65	66	66	67	69	71	73
500	Q.	m ³ /h	116	187	257	328	385	441	498	540	165	258	352	445	520	595	670	726
	Δ t	°C	76	62	54	49	48	47	47	47	73	61	56	54	52	50	43	36
	P. abs	kW	2.8	4	5.1	6.2	7.1	8	8.9	9.6	4.2	5.5	6.9	8.3	9.4	10.5	11.6	12.4
	P.motor	kW	4	5.5	7.5	9.2	9.2	11	11	15	5.5	7.5	9.2	11	15	15	15	18.5
	Lp (A)	s / c	72	74	78	80	82	84	86	88	73	75	79	81	84	86	89	91
	Lp (A)	c / c	65	65	66	66	68	68	70	71	65	65	66	67	68	70	72	73
600	Q.	m ³ /h	108	178	249	319	375	432	488	530	155	247	340	432	506	580	654	709
	Δ t	°C	100	82	70	63	60	59	59	59	93	77	69	64	62	60	56	51
	P. abs	kW	3.4	4.7	6	7.4	8.4	9.5	10.5	11.3	4.7	6.4	8.1	9.7	11.1	12.4	13.7	14.7
	P.motor	kW	5.5	7.5	7.5	9.2	11	15	15	15	7.5	9.2	11	15	15	18.5	18.5	18.5
	Lp (A)	s / c	72	75	79	81	83	86	89	90	74	76	79	82	85	87	90	91
	Lp (A)	c / c	65	65	66	67	68	70	72	73	65	65	66	68	69	70	73	73
700	Q.	m ³ /h	167	237	308	365	421	478	520		233	327	420	495	570	645	701	
	Δ t	°C	105	88	77	73	71	71	71		94	84	78	76	74	71	68	
	P. abs	kW	5.4	6.9	8.5	9.7	10.9	12.1	13.1		7.5	9.3	11.2	12.7	14.2	15.7	16.8	
	P.motor	kW	7.5	9.2	11	15	15	15	18.5		9.2	15	15	18.5	18.5	22	22	
	Lp (A)	s / c	76	79	82	84	88	90	91		77	80	83	86	88	91	92	
	Lp (A)	c / c	65	66	68	69	71	73	74		65	66	68	70	71	73	74	
800	Q.	m ³ /h			225	296	353	410	467	510			317	410	485	560	635	691
	Δ t	°C			104	93	88	86	86	86			97	89	85	84	83	84
	P. abs	kW			8.3	9.9	11.2	12.5	13.8	14.8			10.4	12.6	14.2	15.9	17.6	18.9
	P.motor	kW			11	15	15	18.5	18.5	18.5			15	18.5	18.5	22	22	30
	Lp (A)	s / c			80	83	85	88	90	92			81	84	86	88	91	93
	Lp (A)	c / c			66	68	69	71	73	74			67	68	70	71	73	74
900	Q.	m ³ /h					341	399	457	500								
	Δ t	°C					106	102	100	98								
	P. abs	kW					12.5	14	15.5	16.6								
	P.motor	kW					18.5	18.5	22	22								
	Lp (A)	s / c					87	89	91	94								
	Lp (A)	c / c					70	72	73	75								
1000	Q.	m ³ /h																
	Δ t	°C																
	P. abs	kW																
	P.motor	kW																
	Lp (A)	s / c																
	Lp (A)	c / c																

Composizione gas aspirato / Inlet gas composition : aria / air
 Pressione di aspirazione / Inlet pressure = P1 = 1013 ± 50 mbar
 Densità gas / Gas density : MfPc = 1.2 ± 0.1 Kg m³
 Temperatura di aspirazione / Inlet temperature : T1 = 20 °C ± 5 °C

Tolleranza relativa a portata e potenza assorbita /
 Tolerance referred to capacity and absorbed power: ± 5
 Rumorosità a 1m di distanza con tolleranza /
 Noise level at 1m distance with tolerance : ± 2 dB(A)
 Lp (A) = Rumorosità / Noise level; s/c = senza cabina / without enclosure;
 c/c = con cabina / with enclosure

TABELLA PRESTAZIONI

FUNZIONAMENTO IN COMPRESSIONE

PERFORMANCES TABLE

PRESSURE OPERATION

RL



Δp mbar	Modello / Model		RL1110K / DN. 80							RL1115K / DN. 100								
	Motore r.p.m. motor	soffiante r.p.m. blower	3000							3000								
	Q.	m ³ /h	1500	2000	2500	3000	3400	3800	4200	4500	1500	2000	2500	3000	3400	3800	4200	4500
200	Δ t	°C	23	21	20	20	20	19	20	19	22	20	20	19	19	18	18	18
	P. abs	kW	2.4	3.1	3.8	4.5	5.1	5.7	6.2	6.7	3.6	4.5	4.9	6.4	7.1	7.9	8.6	9.2
	P.motor	kW	3	4	5.5	5.5	7.5	7.5	9.2	9.2	5.5	5.5	7.5	9.2	9.2	11	11	11
	Lp (A)	s / c	72	74	78	81	84	87	90	91	74	76	80	83	86	88	91	92
	Lp (A)	c / c	65	65	66	67	68	70	73	73	65	65	66	68	70	71	73	74
	Q.	m ³ /h	267	381	495	609	700	791	882	950	357	513	668	824	948	1072	1197	1290
300	Δ t	°C	36	33	31	29	29	28	28	28	35	33	31	29	29	28	28	28
	P. abs	kW	3.3	4.3	5.4	6.4	7.3	8.1	9	9.6	4.6	6	7.5	8.9	10.1	11.3	12.4	13.3
	P.motor	kW	4	5.5	7.5	9.2	9.2	11	11	15	5.5	7.5	9.2	11	15	15	18.5	18.5
	Lp (A)	s / c	73	75	79	82	85	88	91	93	75	77	82	85	88	91	94	95
	Lp (A)	c / c	65	65	66	67	69	71	74	74	65	65	68	69	71	73	75	75
	Q.	m ³ /h	245	359	473	587	678	769	860	928	326	482	638	794	918	1043	1168	1261
400	Δ t	°C	50	45	42	40	40	39	39	39	49	43	40	39	39	39	39	38
	P. abs	kW	4.2	5.7	7.1	8.5	9.6	10.8	11.9	12.8	5.9	7.8	9.7	11.5	13	14.5	16	17.1
	P.motor	kW	5.5	7.5	9.2	11	15	15	15	18.5	7.5	11	15	15	18.5	18.5	22	22
	Lp (A)	s / c	74	76	78	83	86	89	92	94	76	79	84	88	91	93	96	97
	Lp (A)	c / c	65	65	66	68	70	72	74	75	65	66	68	71	73	74	76	77
	Q.	m ³ /h	230	344	457	571	662	753	844	912	305	462	618	775	900	1026	1151	1245
500	Δ t	°C	66	58	53	50	49	48	48	48	63	58	54	51	50	49	47	46
	P. abs	kW	5.1	6.9	8.7	10.5	11.9	13.4	14.8	15.9	7	9.4	11.7	14	15.9	17.7	19.6	21
	P.motor	kW	7.5	9.2	11	15	15	18.5	18.5	22	9.2	15	15	18.5	22	22	30	30
	Lp (A)	s / c	75	77	81	84	87	89	93	95	76	79	85	89	91	94	96	97
	Lp (A)	c / c	65	65	67	68	70	72	74	75	65	65	69	72	73	75	76	77
	Q.	m ³ /h	215	329	442	556	647	738	829	897	293	449	605	762	886	1011	1136	1230
600	Δ t	°C	84	74	67	62	60	59	58	58	81	69	63	60	60	59	58	56
	P. abs	kW	5.9	8.1	10.3	12.6	14.3	16.1	17.9	19.2	8.1	11	13.8	16.6	18.9	21.1	23.4	25.1
	P.motor	kW	7.5	11	15	18.5	18.5	22	22	30	11	15	18.5	22	30	30	30	30
	Lp (A)	s / c	76	78	82	86	88	91	94	96	77	80	85	89	92	95	96	98
	Lp (A)	c / c	65	66	68	70	71	73	74	76	65	66	69	72	74	75	76	77
	Q.	m ³ /h	200	314	427	541	632	723	814	882	277	433	590	746	871	996	1121	1215
700	Δ t	°C	101	96	88	79	73	69	69	71								
	P. abs	kW	6.9	9.4	11.9	14.5	16.5	18.6	20.6	22.1								
	P.motor	kW	9.2	15	15	18.5	22	30	30	30								
	Lp (A)	s / c	77	80	84	88	90	94	96	98								
	Lp (A)	c / c	65	66	68	71	73	75	76	77								
	Q.	m ³ /h	188	302	415	528	618	709	799	867								
800	Δ t	°C				108	94	84	77	76								
	P. abs	kW				13.4	16.3	18.7	21	23.3								
	P.motor	kW				18.5	22	30	30	30								
	Lp (A)	s / c				85	90	93	95	97								
	Lp (A)	c / c				69	73	74	75	77								
	Q.	m ³ /h				399	511	601	691	781	848							
900	Δ t	°C																
	P. abs	kW																
	P.motor	kW																
	Lp (A)	s / c																
	Lp (A)	c / c																
	Q.	m ³ /h																
1000	Δ t	°C																
	P. abs	kW																
	P.motor	kW																
	Lp (A)	s / c																
	Lp (A)	c / c																
	Q.	m ³ /h																

Composizione gas aspirato / Inlet gas composition : aria / air
 Pressione di aspirazione / Inlet pressure = P1 = 1013 ± 50 mbar
 Densità gas / Gas density : MfPc = 1.2 ± 0.1 Kg m³
 Temperatura di aspirazione / Inlet temperature : T1 = 20 °C ± 5 °C

Tolleranza relativa a portata e potenza assorbita /
 Tolerance referred to capacity and absorbed power: ± 5
 Rumorosità a 1m di distanza con tolleranza /
 Noise level at 1m distance with tolerance : ± 2 dB(A)
 Lp (A) = Rumorosità / Noise level; s/c = senza cabina / without enclosure;
 c/c = con cabina / with enclosure

TABELLA PRESTAZIONI

FUNZIONAMENTO IN COMPRESIONE

PERFORMANCES TABLE

PRESSURE OPERATION



Δp mbar	Modello / Model		RL1116K / DN. 100							RL1117K / DN. 100								
	Motore r.p.m. motor	soffiante r.p.m. blower	3000							3000								
			1500	2000	2400	2800	3200	3600	4000	4300	1500	2000	2400	2800	3200	3600	4000	4300
200	Q.	m ³ /h	320	449	552	655	758	861	963	1041	442	624	769	915	1060	1206	1351	1460
	Δ t	°C	21	19	18	17	16	16	15	15	21	19	18	17	17	16	16	16
	P. abs	kW	3	3.6	4.1	4.6	5.2	5.7	6.2	6.6	3.9	4.9	5.7	6.5	7.3	8.2	9	9.6
	P.motor	kW	4	5.5	5.5	7.5	7.5	7.5	9.2	9.2	5.5	7.5	7.5	9.2	9.2	11	11	15
	Lp (A)	s / c	75	77	79	83	84	86	87	90	77	80	84	87	89	92	93	94
	Lp (A)	c / c	67	67	68	68	69	70	70	73	67	68	69	70	72	73	73	74
300	Q.	m ³ /h	300	429	533	636	740	843	947	1024	420	602	748	894	1039	1185	1331	1440
	Δ t	°C	31	29	28	27	25	25	24	23	31	29	28	27	27	26	25	25
	P. abs	kW	4.2	5.2	6	6.8	7.6	8.5	9.3	9.9	5.3	6.9	8.2	9.5	10.8	12.1	13.4	14.3
	P.motor	kW	5.5	7.5	7.5	9.2	9.2	11	15	15	7.5	9.2	11	15	15	15	18.5	18.5
	Lp (A)	s / c	76	78	80	85	86	88	89	91	77	81	86	89	90	93	95	96
	Lp (A)	c / c	67	67	68	70	70	71	71	72	67	69	70	71	72	73	74	75
400	Q.	m ³ /h	288	417	520	623	726	829	932	1009	405	588	734	880	1026	1172	1318	1428
	Δ t	°C	42	39	38	37	36	36	35	35	42	40	38	37	37	36	36	36
	P. abs	kW	5.2	6.6	7.8	8.9	10.1	11.2	12.4	13.3	7	9.1	10.8	12.5	14.2	15.9	17.5	18.8
	P.motor	kW	7.5	9.2	11	11	15	15	18.5	18.5	9.2	11	15	18.5	18.5	22	22	30
	Lp (A)	s / c	76	78	81	84	86	88	90	92	78	81	86	89	91	92	94	96
	Lp (A)	c / c	67	67	69	70	70	71	72	73	67	69	70	71	72	72	74	75
500	Q.	m ³ /h	273	402	505	608	711	814	916	994	390	573	719	865	1012	1158	1304	1414
	Δ t	°C	55	52	50	48	47	46	45	44	55	52	50	49	48	47	46	46
	P. abs	kW	6.4	8.2	9.7	11.1	12.6	14	15.5	16.6	8.7	11.4	13.4	15.6	17.7	19.8	21.9	23.4
	P.motor	kW	9.2	11	15	15	18.5	18.5	22	22	11	15	18.5	22	22	30	30	30
	Lp (A)	s / c	77	79	82	85	86	89	90	93	80	83	86	90	94	95	96	97
	Lp (A)	c / c	67	68	70	70	70	71	72	73	68	70	70	72	74	74	75	76
600	Q.	m ³ /h	258	387	490	593	696	799	901	979	375	558	704	850	996	1142	1288	1398
	Δ t	°C	67	64	62	60	59	57	54	51	68	64	62	61	60	59	57	56
	P. abs	kW	7.4	9.6	11.4	13.2	15	16.8	18.6	19.9	10.3	13.5	16	18.5	21.1	23.6	26.1	28
	P.motor	kW	9.2	15	15	18.5	18.5	22	30	30	15	18.5	22	30	30	30	37	37
	Lp (A)	s / c	78	80	83	86	88	90	92	94	80	83	87	90	92	93	94	95
	Lp (A)	c / c	68	69	70	70	70	72	73	74	68	70	70	72	73	73	74	74
700	Q.	m ³ /h	243	372	475	579	682	785	889	966	361	544	690	836	982	1128	1274	1384
	Δ t	°C	78	75	74	72	69	67	64	61	79	76	74	72	71	69	67	66
	P. abs	kW	8.6	11.2	13.3	15.4	17.5	19.6	21.7	23.3	11.8	15.5	18.4	21.4	24.3	27.3	30.2	32.4
	P.motor	kW	11	15	18.5	22	22	30	30	30	15	22	22	30	30	37	37	45
	Lp (A)	s / c	80	82	85	88	89	91	93	94	81	83	89	93	94	97	98	99
	Lp (A)	c / c	69	70	70	70	70	72	73	74	69	70	70	73	74	77	77	78
800	Q.	m ³ /h	232	360	463	565	668	771	873	950	347	529	674	820	965	1111	1256	1365
	Δ t	°C	96	89	86	83	80	78	77	75	97	90	86	84	82	80	79	78
	P. abs	kW	9.8	12.8	15.2	17.6	20	22.4	24.8	26.6	13.5	17.7	21	24.3	27.7	31	34.3	36.8
	P.motor	kW	15	18.5	18.5	22	30	30	30	37	18.5	22	30	30	37	37	45	45
	Lp (A)	s / c	81	83	86	89	90	92	94	95	85	90	94	96	100	101	102	103
	Lp (A)	c / c	69	70	70	70	71	72	74	74	70	71	74	75	79	79	81	83
900	Q.	m ³ /h			449	552	655	758	862	939								
	Δ t	°C			108	99	95	92	89	86								
	P. abs	kW			17	19.8	22.5	25.2	28.7	30.1								
	P.motor	kW			22	30	30	30	37	37								
	Lp (A)	s / c			91	93	95	98	99	100								
	Lp (A)	c / c			72	73	74	77	78	79								
1000	Q.	m ³ /h				645	748	852	929									
	Δ t	°C				107	102	98	96									
	P. abs	kW				25	28	30.8	33.4									
	P.motor	kW				30	37	37	45									
	Lp (A)	s / c				96	97	99	101									
	Lp (A)	c / c				75	77	78	79									

Composizione gas aspirato / Inlet gas composition : aria / air
 Pressione di aspirazione / Inlet pressure = P1 = 1013 ± 50 mbar
 Densità gas / Gas density : MfPc = 1.2 ± 0.1 Kg m³
 Temperatura di aspirazione / Inlet temperature : T1 = 20 °C ± 5 °C

Tolleranza relativa a portata e potenza assorbita /
 Tolerance referred to capacity and absorbed power: ± 5
 Rumorosità a 1m di distanza con tolleranza /
 Noise level at 1m distance with tolerance : ± 2 dB(A)
 Lp (A) = Rumorosità / Noise level; s/c = senza cabina / without enclosure;
 c/c = con cabina / with enclosure

TABELLA PRESTAZIONI

FUNZIONAMENTO IN COMPRESSIONE

PERFORMANCES TABLE

PRESSURE OPERATION

RL



Δp mbar	Modello / Model		RL1118K / DN. 150							RL1120K / DN. 100								
	Motore r.p.m. motor	soffiante r.p.m. blower	3000							3000								
	Q.	m ³ /h	1500	2000	2400	2800	3200	3600	4000	4300	1500	1900	2300	2600	2900	3200	3400	3600
200	Δ t	°C	20	19	18	18	18	17	17	17	22	20	18	16	15	14	14	14
	P. abs	kW	4.4	6	7.2	8.5	9.7	11	12.2	13.1	5.6	6.7	7.8	8.6	9.5	10.3	10.9	11.4
	P.motor	kW	5.5	7.5	9.2	11	15	15	15	18.5	7.5	9.2	11	11	15	15	15	15
	Lp (A)	s / c	77	81	87	89	90	93	94	95	78	81	87	87	88	91	94	95
	Lp (A)	c / c	67	69	71	71	72	73	74	75	67	69	71	71	71	73	74	75
	Q.	m ³ /h	640	901	1110	1318	1527	1736	1944	2101	565	746	927	1063	1198	1334	1425	1515
300	Δ t	°C	30	28	27	27	27	27	26	23	31	28	26	26	26	25	25	25
	P. abs	kW	7	9.3	11	12.8	14.6	16.4	18.1	19.5	7	8.8	10.5	11.8	13.2	14.5	15.3	16.2
	P.motor	kW	9.2	15	15	18.5	18.5	22	22	30	9.2	11	15	15	18.5	18.5	18.5	22
	Lp (A)	s / c	78	82	88	90	91	94	95	96	79	82	87	87	89	92	93	95
	Lp (A)	c / c	67	68	71	72	73	74	75	76	69	69	71	71	71	72	73	75
	Q.	m ³ /h	617	874	1080	1286	1491	1697	1903	2057	540	723	906	1043	1180	1317	1409	1500
400	Δ t	°C	43	40	38	38	37	37	36	34	43	38	36	36	36	36	36	36
	P. abs	kW	9.2	12.3	14.7	17.1	19.6	22	24.4	26.3	8.9	11.2	13.5	15.2	17	18.7	19.9	21
	P.motor	kW	11	15	18.5	22	30	30	30	37	11	15	18.5	18.5	22	30	30	30
	Lp (A)	s / c	79	83	88	90	92	94	95	96	80	83	88	88	90	93	94	96
	Lp (A)	c / c	68	69	71	72	73	74	75	75	69	70	71	71	72	73	74	75
	Q.	m ³ /h	590	849	1056	1263	1470	1677	1883	2039	520	703	886	1023	1160	1297	1389	1480
500	Δ t	°C	55	51	49	48	47	47	46	45	55	50	48	47	46	46	46	46
	P. abs	kW	11.4	15.3	18.4	21.4	24.5	27.6	30.7	32.9	11.1	13.8	16.5	18.6	20.6	22.7	24.1	25.4
	P.motor	kW	15	18.5	22	30	30	37	37	45	15	18.5	22	30	30	30	30	30
	Lp (A)	s / c	80	83	88	91	94	95	96	97	81	83	88	89	91	94	95	97
	Lp (A)	c / c	69	69	71	72	74	75	75	76	69	70	71	71	73	74	75	76
	Q.	m ³ /h	568	827	1034	1242	1449	1656	1864	2019	505	688	871	1008	1145	1282	1374	1465
600	Δ t	°C	69	64	61	59	57	56	55	54	67	63	59	57	56	55	55	55
	P. abs	kW	13.8	18.3	22	25.6	29.2	32.8	36.4	39.2	12.5	15.8	19.1	21.6	24.1	26.6	28.2	29.8
	P.motor	kW	18.5	22	30	30	37	45	45	55	18.5	22	30	30	30	37	37	37
	Lp (A)	s / c	80	83	88	91	94	95	95	97	82	84	89	91	93	96	97	98
	Lp (A)	c / c	69	69	71	72	74	75	75	76	70	70	71	73	73	75	76	76
	Q.	m ³ /h	540	801	1010	1218	1427	1636	1844	2001	485	667	849	985	1122	1258	1349	1440
700	Δ t	°C	80	73	69	67	67	67	66	66	80	73	69	68	67	67	66	66
	P. abs	kW	14.4	18.2	22.1	25	27.9	30.8	32.7	34.6	14.4	18.2	22.1	25	27.9	30.8	32.7	34.6
	P.motor	kW	18.5	22	30	30	37	45	45	55	18.5	22	30	30	37	37	45	45
	Lp (A)	s / c	84	86	90	92	95	97	99	100	84	86	90	92	95	97	99	100
	Lp (A)	c / c	70	70	72	73	75	76	76	77	70	70	72	73	75	76	76	77
	Q.	m ³ /h	465	648	831	968	1105	1242	1334	1425	465	648	831	968	1105	1242	1334	1425
800	Δ t	°C	95	87	82	80	79	78	78	78	95	87	82	80	79	78	78	78
	P. abs	kW	16.6	20.9	25.2	28.4	31.7	34.9	37	39.2	16.6	20.9	25.2	28.4	31.7	34.9	37	39.2
	P.motor	kW	22	30	30	37	45	45	55	55	22	30	30	37	45	45	55	55
	Lp (A)	s / c	85	87	91	94	97	98	100	101	85	87	91	94	97	98	100	101
	Lp (A)	c / c	70	70	73	74	76	76	76	77	70	70	73	74	76	76	77	77
	Q.	m ³ /h	445	628	811	948	1085	1222	1314	1405	445	628	811	948	1085	1222	1314	1405
900	Δ t	°C	107	102	101	101	101	100	100	100	792	929	1066	1203	1294	1385	1480	1580
	P. abs	kW	28.1	31.8	35.5	39.2	41.7	44.2	46.7	49.2	28.1	31.8	35.5	39.2	41.7	44.2	46.7	49.2
	P.motor	kW	37	45	55	55	65	75	75	85	37	45	55	55	65	75	75	85
	Lp (A)	s / c	93	96	98	100	102	103	104	105	93	96	98	100	102	103	104	105
	Lp (A)	c / c	73	76	76	77	78	79	80	81	73	76	76	77	78	79	80	81
	Q.	m ³ /h	425	608	791	928	1065	1202	1294	1385	425	608	791	928	1065	1202	1294	1385
1000	Δ t	°C	127	122	121	121	120	120	120	120	107	102	101	101	101	100	100	100
	P. abs	kW	31	35	39.1	43.2	45.9	48.6	51.3	54	31	35	39.1	43.2	45.9	48.6	51.3	54
	P.motor	kW	37	45	55	55	65	75	75	85	37	45	55	55	65	75	75	85
	Lp (A)	s / c	94	96	98	102	103	104	105	106	94	96	98	102	103	104	105	106
	Lp (A)	c / c	74	76	76	78	79	80	81	82	74	76	76	78	79	80	81	82
	Q.	m ³ /h	405	588	771	908	1045	1182	1274	1365	405	588	771	908	1045	1182	1274	1365

Composizione gas aspirato / Inlet gas composition : aria / air
 Pressione di aspirazione / Inlet pressure = P1 = 1013 ± 50 mbar
 Densità gas / Gas density : MfPc = 1.2 ± 0.1 Kg m³
 Temperatura di aspirazione / Inlet temperature : T1 = 20 °C ± 5 °C

Tolleranza relativa a portata e potenza assorbita /
 Tolerance referred to capacity and absorbed power: ± 5
 Rumorosità a 1m di distanza con tolleranza /
 Noise level at 1m distance with tolerance : ± 2 dB(A)
 Lp (A) = Rumorosità / Noise level; s/c = senza cabina / without enclosure;
 c/c = con cabina / with enclosure

TABELLA PRESTAZIONI

FUNZIONAMENTO IN COMPRESSIONE

PERFORMANCES TABLE

PRESSURE OPERATION



Δp mbar	Modello / Model		RL1150K / DN. 150							RL1200K / DN. 200								
	Motore r.p.m. motor	soffiante r.p.m. blower	3000							3000								
			1500	1900	2300	2600	2900	3200	3400	3600	1500	1900	2300	2600	2900	3200	3400	3600
200	Q.	m ³ /h	1052	1361	1669	1901	2132	2364	2518	2672	1349	1744	2140	2436	2733	3029	3227	3425
	Δ t	°C	19	18	18	17	17	16	15	13	21	20	19	18	18	17	17	17
	P. abs	kW	7.8	9.5	11.2	12.4	13.7	15	15.8	16.7	11.1	14.1	17.2	19.4	21.7	24	25.5	27
	P.motor	kW	11	15	15	18.5	18.5	18.5	22	22	15	18.5	22	30	30	30	30	37
	Lp (A)	s / c	78	81	86	87	88	91	94	95	81	83	87	90	91	93	94	95
	Lp (A)	c / c	67	69	71	71	71	73	74	75	69	70	71	72	73	73	74	74
300	Q.	m ³ /h	1013	1319	1625	1854	2084	2313	2466	2619	1289	1687	2085	2383	2681	2980	3179	3377
	Δ t	°C	30	28	28	27	27	26	24	22	32	30	29	28	28	27	27	26
	P. abs	kW	11	13.7	16.4	18.4	20.4	22.4	23.8	25.1	15.7	19.4	23.1	26.4	28.6	31.4	33.3	35.1
	P.motor	kW	15	18.5	22	22	30	30	30	30	22	30	30	37	37	37	45	45
	Lp (A)	s / c	79	81	87	88	89	92	94	96	83	85	89	91	92	94	95	96
	Lp (A)	c / c	69	69	71	71	72	73	74	75	70	70	72	73	73	74	74	76
400	Q.	m ³ /h	963	1269	1575	1804	2034	2263	2416	2569	1255	1654	2052	2352	2651	2950	3149	3349
	Δ t	°C	40	38	38	37	37	35	33	29	44	40	38	37	36	35	35	35
	P. abs	kW	14.2	17.9	21.6	24.4	27.2	29.9	31.8	33.6	19	24	29.1	32.8	36.6	40.4	42.9	45.5
	P.motor	kW	18.5	22	30	30	37	37	37	45	30	30	37	45	45	55	55	55
	Lp (A)	s / c	81	81	87	89	90	93	96	97	84	86	90	93	94	96	96	97
	Lp (A)	c / c	69	69	71	72	72	73	75	76	70	71	72	74	76	77	77	77
500	Q.	m ³ /h	937	1243	1549	1779	2009	2238	2391	2545	1224	1622	2020	2318	2616	2915	3114	3312
	Δ t	°C	53	50	48	47	47	46	47	47	54	50	48	47	46	45	44	42
	P. abs	kW	18.1	22.6	27.2	30.6	34	37.4	39.7	42	22.9	29	35	39.5	44.1	48.6	51.7	54.7
	P.motor	kW	22	30	37	37	45	45	55	55	30	37	45	55	55	75	75	75
	Lp (A)	s / c	82	84	89	91	93	95	97	99	85	87	91	94	96	97	97	98
	Lp (A)	c / c	70	70	72	73	73	75	76	77	70	72	73	76	77	77	77	79
600	Q.	m ³ /h	902	1209	1517	1747	1978	2208	2362	2516	1199	1597	1995	2293	2591	2890	3089	3287
	Δ t	°C	66	62	60	59	58	55	52	48	66	60	58	57	57	55	54	51
	P. abs	kW	21.3	26.8	32.4	36.6	40.7	44.9	47.7	50.4	26.9	34.3	41.7	47.3	52.8	58.4	62.1	65.8
	P.motor	kW	30	37	45	45	55	55	55	75	37	45	55	55	75	75	90	90
	Lp (A)	s / c	84	86	90	92	95	97	99	100	86	89	93	95	97	98	99	101
	Lp (A)	c / c	70	71	72	73	75	76	77	77	70	72	73	76	77	79	81	82
700	Q.	m ³ /h	876	1182	1488	1717	1946	2175	2328	2481								
	Δ t	°C	78	73	70	68	66	64	63	62								
	P. abs	kW	24.5	31.1	37.6	42.5	47.5	52.4	55.7	58.9								
	P.motor	kW	30	37	45	55	55	75	75	90								
	Lp (A)	s / c	86	88	91	93	97	98	100	101								
	Lp (A)	c / c	71	71	73	73	76	76	77	78								
800	Q.	m ³ /h	861	1166	1472	1700	1929	2158	2311	2463								
	Δ t	°C	91	84	80	78	76	73	70	66								
	P. abs	kW	28.4	35.8	43.2	48.7	54.3	59.8	63.5	67.2								
	P.motor	kW	37	45	55	75	75	75	90	90								
	Lp (A)	s / c	87	89	92	95	98	99	101	102								
	Lp (A)	c / c	71	72	73	75	76	77	78	80								
900	Q.	m ³ /h																
	Δ t	°C																
	P. abs	kW																
	P.motor	kW																
	Lp (A)	s / c																
	Lp (A)	c / c																
1000	Q.	m ³ /h																
	Δ t	°C																
	P. abs	kW																
	P.motor	kW																
	Lp (A)	s / c																
	Lp (A)	c / c																

Composizione gas aspirato / Inlet gas composition : aria / air
 Pressione di aspirazione / Inlet pressure = P1 = 1013 ± 50 mbar
 Densità gas / Gas density : MfPc = 1.2 ± 0.1 Kg m³
 Temperatura di aspirazione / Inlet temperature : T1 = 20 °C ± 5 °C

Tolleranza relativa a portata e potenza assorbita /
 Tolerance referred to capacity and absorbed power: ± 5
 Rumorosità a 1m di distanza con tolleranza /
 Noise level at 1m distance with tolerance : ± 2 dB(A)
 Lp (A) = Rumorosità / Noise level; s/c = senza cabina / without enclosure;
 c/c = con cabina / with enclosure

TABELLA PRESTAZIONI

FUNZIONAMENTO IN COMPRESSIONE

PERFORMANCES TABLE

PRESSURE OPERATION

RL



Δp mbar	Modello / Model		RL1250K / DN. 150							RL1350K / DN. 200								
	Motore r.p.m. motor	soffiante r.p.m. blower	1500							1500								
200	Q.	m ³ /h	747	1089	1333	1578	1773	1969	2164	2360	965	1407	1723	2039	2292	2544	2797	3050
	Δ t	°C	22	20	20	19	19	19	18	18	21	19	18	17	17	17	17	17
	P. abs	kW	7.4	9.1	10.3	11.6	12.5	13.5	14.5	15.5	8.5	11.2	13.2	15.1	16.6	18.2	19.7	21.2
	P.motor	kW	9.2	11	15	15	18.5	18.5	18.5	22	11	15	18.5	18.5	22	22	30	30
	Lp (A)	s / c	80	82	84	87	89	91	93	95	83	84	86	88	90	91	93	94
	Lp (A)	c / c	70	70	71	72	73	74	75	75	71	71	72	73	74	74	75	76
300	Q.	m ³ /h	707	1049	1293	1538	1733	1929	2124	2320	938	1375	1688	2000	2250	2500	2750	3000
	Δ t	°C	33	28	28	27	27	27	27	27	33	28	28	27	27	27	26	26
	P. abs	kW	10	12.8	14.7	16.6	18.2	19.7	21.3	22.8	12.1	16.1	18.9	21.8	24.1	26.4	28.7	30.9
	P.motor	kW	15	18.5	18.5	22	22	30	30	30	15	22	30	30	30	37	37	37
	Lp (A)	s / c	82	85	86	89	90	93	94	97	85	86	87	89	92	93	95	96
	Lp (A)	c / c	70	72	72	73	74	75	75	78	72	72	73	73	75	75	76	77
400	Q.	m ³ /h	667	1009	1253	1498	1693	1889	2084	2280	888	1328	1642	1956	2207	2458	2709	2960
	Δ t	°C	45	39	39	38	38	38	38	36	46	41	39	37	37	37	37	37
	P. abs	kW	12.7	16.4	19.1	21.7	23.8	26	28.1	30.2	15.2	20.5	24.3	28	31.1	34.1	37.1	40.1
	P.motor	kW	18.5	22	30	30	30	37	37	37	18.5	30	30	37	37	45	45	45
	Lp (A)	s / c	83	87	88	90	92	95	97	99	86	87	88	91	93	96	97	98
	Lp (A)	c / c	71	73	73	74	75	76	78	80	72	73	73	75	75	77	78	79
500	Q.	m ³ /h	627	969	1213	1458	1653	1849	2044	2240	863	1300	1613	1925	2175	2425	2675	2925
	Δ t	°C	59	52	49	48	48	48	48	48	59	52	49	47	47	47	47	47
	P. abs	kW	15.6	20.3	23.6	26.9	29.6	32.3	34.9	37.6	18.3	25	29.7	34.4	38.2	42	45.8	49.6
	P.motor	kW	22	30	30	37	37	45	45	45	22	30	37	45	45	55	55	75
	Lp (A)	s / c	83	88	89	91	93	96	98	100	87	89	90	92	94	97	98	100
	Lp (A)	c / c	71	73	74	75	75	77	79	82	73	74	74	75	76	78	79	82
600	Q.	m ³ /h	588	932	1178	1423	1620	1817	2013	2210	819	1261	1576	1891	2143	2396	2648	2900
	Δ t	°C	75	66	62	59	57	56	56	56	75	65	61	58	57	57	56	56
	P. abs	kW	17.3	23.1	27.3	31.5	34.9	38.2	41.6	44.9	21.8	29.7	35.3	40.9	45.4	49.9	54.4	58.9
	P.motor	kW	22	30	37	37	45	45	55	55	30	37	45	55	55	75	75	75
	Lp (A)	s / c	84	89	90	92	95	97	98	101	88	90	91	93	95	99	100	101
	Lp (A)	c / c	72	74	74	75	76	78	79	83	73	74	75	75	76	80	82	83
700	Q.	m ³ /h	567	909	1153	1398	1593	1789	1984	2180	788	1225	1538	1850	2100	2350	2600	2850
	Δ t	°C	91	80	75	71	69	68	67	67	91	77	71	68	67	67	67	67
	P. abs	kW	19.9	26.8	31.7	36.6	40.5	44.4	48.4	52.3	24.6	33.8	40.4	47	52.3	57.6	62.8	68.1
	P.motor	kW	30	37	37	45	55	55	75	75	30	45	55	55	75	75	75	90
	Lp (A)	s / c	85	90	91	93	96	99	99	102	89	90	92	93	95	99	100	101
	Lp (A)	c / c	72	74	75	75	77	80	80	84	74	74	75	75	76	80	82	83
800	Q.	m ³ /h	547	889	1133	1378	1573	1769	1964	2160	739	1179	1494	1808	2060	2312	2563	2815
	Δ t	°C	108	94	87	83	81	79	79	78	106	90	83	79	77	77	77	77
	P. abs	kW	22.5	30.2	35.7	41.2	45.7	50.1	54.5	58.9	28.4	38.8	46.2	53.6	59.5	65.5	71.4	77.3
	P.motor	kW	30	37	45	55	55	75	75	75	37	55	55	75	75	90	90	90
	Lp (A)	s / c	86	91	92	94	97	100	101	103	89	91	93	96	97	100	101	102
	Lp (A)	c / c	72	75	75	76	78	82	83	85	74	75	75	77	78	82	83	84
900	Q.	m ³ /h			1089	1335	1531	1727	1924	2120								
	Δ t	°C			102	97	94	92	91	90								
	P. abs	kW			40.3	46.7	51.8	56.8	61.9	67								
	P.motor	kW			55	55	75	75	90	90								
	Lp (A)	s / c			94	95	98	101	102	103								
	Lp (A)	c / c			77	77	79	83	84	85								
1000	Q.	m ³ /h			1295	1491	1687	1884	2080									
	Δ t	°C			109	106	103	101	101									
	P. abs	kW			51.2	56.8	62.4	68	73.6									
	P.motor	kW			75	75	90	90	90									
	Lp (A)	s / c			97	99	102	103	104									
	Lp (A)	c / c			78	80	84	85	86									

Composizione gas aspirato / Inlet gas composition : aria / air
 Pressione di aspirazione / Inlet pressure = P1 = 1013 ± 50 mbar
 Densità gas / Gas density : MfPc = 1.2 ± 0.1 Kg m³
 Temperatura di aspirazione / Inlet temperature : T1 = 20 °C ± 5 °C

Tolleranza relativa a portata e potenza assorbita /
 Tolerance referred to capacity and absorbed power: ± 5
 Rumorosità a 1m di distanza con tolleranza /
 Noise level at 1m distance with tolerance : ± 2 dB(A)
 Lp (A) = Rumorosità / Noise level; s/c = senza cabina / without enclosure;
 c/c = con cabina / with enclosure

TABELLA PRESTAZIONI

FUNZIONAMENTO IN COMPRESSIONE

PERFORMANCES TABLE

PRESSURE OPERATION



Δp mbar	Modello / Model		RL1400K / DN. 200								RL1450K / DN. 200							
	Motore r.p.m. motor	soffiante r.p.m. blower	1500								1500							
			950	1300	1550	1800	2000	2200	2400	2600	900	1150	1350	1500	1650	1800	1950	2100
200	Q.	m ³ /h	1287	1862	2273	2684	3013	3342	3671	4000	1347	1758	2087	2333	2580	2827	3073	3320
	Δ t	°C	23	21	20	20	19	19	19	19	20	17	16	16	15	15	15	15
	P. abs	kW	10.3	13.8	16.2	18.7	20.6	22.6	24.6	26.5	11.3	13.6	15.4	16.7	18.1	19.4	20.8	22.1
	P.motor	kW	15	18.5	22	30	30	30	30	37	15	18.5	18.5	22	22	30	30	30
	Lp (A)	s / c	83	85	88	90	92	93	95	97	87	90	92	93	94	95	95	96
	Lp (A)	c / c	71	72	73	74	74	75	76	78	72	74	75	75	76	76	76	76
300	Q.	m ³ /h	1218	1798	2212	2626	2957	3288	3619	3950	1280	1688	2015	2260	2505	2750	2995	3240
	Δ t	°C	34	31	29	29	29	28	28	28	32	29	28	28	27	27	27	26
	P. abs	kW	13.4	18.8	22.7	26.6	29.7	32.8	35.9	39	15.4	18.8	21.6	23.7	25.8	27.9	30	32
	P.motor	kW	18.5	30	30	37	37	45	45	55	18.5	30	30	30	37	37	37	45
	Lp (A)	s / c	84	86	89	91	93	95	96	98	90	93	94	96	97	97	98	98
	Lp (A)	c / c	72	73	74	75	75	76	76	79	74	75	76	77	78	78	79	79
400	Q.	m ³ /h	1168	1748	2162	2576	2907	3238	3569	3900	1231	1641	1969	2216	2462	2708	2954	3200
	Δ t	°C	48	43	41	40	39	39	39	39	44	39	37	36	35	35	35	35
	P. abs	kW	16.3	23.3	28.3	33.3	37.3	41.3	45.3	49.3	20.4	24.9	28.5	31.2	33.9	36.6	39.3	42
	P.motor	kW	22	30	37	45	45	55	55	75	30	30	37	37	45	45	55	55
	Lp (A)	s / c	85	88	90	92	94	97	98	99	92	95	96	98	98	99	99	100
	Lp (A)	c / c	72	73	74	74	76	78	79	80	75	76	77	79	79	80	80	81
500	Q.	m ³ /h	1118	1698	2112	2526	2857	3188	3519	3850	1177	1588	1917	2163	2410	2657	2903	3150
	Δ t	°C	60	54	52	51	50	50	50	50	57	50	48	47	47	47	47	46
	P. abs	kW	20.7	29.4	35.7	41.9	46.9	51.9	56.9	61.8	25.3	30.6	34.9	38.1	41.2	44.4	47.6	50.8
	P.motor	kW	30	37	45	55	55	75	75	75	30	37	45	45	55	55	55	75
	Lp (A)	s / c	86	89	91	93	95	98	99	101	93	97	98	99	99	100	100	101
	Lp (A)	c / c	73	74	75	75	76	79	80	82	75	78	79	80	80	81	81	82
600	Q.	m ³ /h	1068	1648	2062	2476	2807	3138	3469	3800	1126	1535	1862	2108	2353	2599	2844	3090
	Δ t	°C	76	68	64	62	60	60	60	60	70	62	58	56	55	55	55	55
	P. abs	kW	24.3	34.6	42	49.3	55.2	61.1	67	72.9	28.5	35.4	41	45.2	49.3	53.5	57.7	61.8
	P.motor	kW	30	45	55	75	75	75	90	90	37	45	55	55	75	75	75	75
	Lp (A)	s / c	87	90	92	94	96	99	100	102	95	98	99	100	101	101	102	102
	Lp (A)	c / c	73	74	74	76	76	80	81	83	76	79	80	81	82	82	83	83
700	Q.	m ³ /h									1086	1495	1822	2068	2313	2559	2804	3050
	Δ t	°C									82	72	69	68	67	67	67	67
	P. abs	kW									32.9	41	47.5	52.3	57.2	62.1	66.9	71.8
	P.motor	kW									45	55	55	75	75	75	90	90
	Lp (A)	s / c									96	99	100	100	102	102	102	103
	Lp (A)	c / c									77	80	81	81	83	83	83	84
800	Q.	m ³ /h									1046	1455	1782	2028	2273	2519	2764	3010
	Δ t	°C									96	84	78	76	75	75	75	75
	P. abs	kW									36.6	46	53.5	59.2	64.8	70.4	76	82
	P.motor	kW									45	55	75	75	90	90	90	110
	Lp (A)	s / c									97	100	100	101	101	102	102	103
	Lp (A)	c / c									78	81	81	82	82	83	83	84
900	Q.	m ³ /h									1410	1739	1985	2231	2478	2724	2970	
	Δ t	°C									101	94	90	87	85	85	85	
	P. abs	kW									50.6	59.2	65.7	72.2	78.7	85	92	
	P.motor	kW									75	75	90	90	90	110	110	
	Lp (A)	s / c									101	101	102	102	103	103	104	
	Lp (A)	c / c									82	82	83	83	84	84	85	
1000	Q.	m ³ /h									1700	1946	2192	2438	2684	2930		
	Δ t	°C									106	100	97	96	95	95		
	P. abs	kW									65.2	72.5	79.8	87	94	102		
	P.motor	kW									90	90	110	110	110	132		
	Lp (A)	s / c									102	102	103	103	104	105		
	Lp (A)	c / c									82	82	84	84	85	85		

Composizione gas aspirato / Inlet gas composition : aria / air
 Pressione di aspirazione / Inlet pressure = P1 = 1013 ± 50 mbar
 Densità gas / Gas density : MfPc = 1.2 ± 0.1 Kg m³
 Temperatura di aspirazione / Inlet temperature : T1 = 20 °C ± 5 °C

Tolleranza relativa a portata e potenza assorbita /
 Tolerance referred to capacity and absorbed power: ± 5
 Rumorosità a 1m di distanza con tolleranza /
 Noise level at 1m distance with tolerance : ± 2 dB(A)
 Lp (A) = Rumorosità / Noise level; s/c = senza cabina / without enclosure;
 c/c = con cabina / with enclosure

TABELLA PRESTAZIONI

FUNZIONAMENTO IN COMPRESSIONE

PERFORMANCES TABLE

PRESSURE OPERATION

RL



Δp mbar	Modello / Model		RL1550K / DN. 250							RL1600K / DN. 250								
	Motore r.p.m. motor	soffiante r.p.m. blower	1500							1500								
200	Q.	m ³ /h	1978	2607	3111	3489	3867	4244	4622	5000	2607	3418	4067	4553	5040	5527	6013	6500
	Δ t	°C	21	20	19	19	19	18	18	18	20	19	18	18	18	17	17	17
	P. abs	kW	12.6	16.4	19.5	21.8	24.1	26.4	28.7	30.9	17.7	22.6	26.5	29.5	32.4	35.4	38.3	41.2
	P.motor	kW	18.5	22	30	30	30	37	37	37	22	30	37	37	45	45	45	55
	Lp (A)	s / c	89	92	94	95	96	97	97	97	91	93	95	97	99	100	100	101
	Lp (A)	c / c	70	71	73	74	75	76	76	77	72	73	75	76	77	79	79	80
300	Q.	m ³ /h	1922	2543	3039	3411	3783	4156	4528	4900	2489	3304	3956	4444	4933	5422	5911	6400
	Δ t	°C	30	29	28	28	27	27	27	26	31	29	28	28	28	28	27	27
	P. abs	kW	19.7	25.4	30	33.4	36.8	40.3	43.7	47.1	27.2	34.4	40.2	44.5	48.9	53.2	57.5	61.8
	P.motor	kW	30	30	37	45	45	55	55	55	37	45	55	55	75	75	75	75
	Lp (A)	s / c	91	94	95	97	97	98	98	99	92	94	95	98	99	100	100	102
	Lp (A)	c / c	70	73	74	76	76	78	78	79	73	74	75	76	77	79	79	81
400	Q.	m ³ /h	1828	2457	2961	3339	3717	4094	4472	4850	2389	3204	3856	4344	4833	5322	5811	6300
	Δ t	°C	42	39	37	36	36	35	35	35	44	42	41	40	40	40	39	39
	P. abs	kW	26.7	34.3	40.4	45	49.6	54.2	58.8	63.3	35.3	45.2	53	58.9	64.8	70.7	77	82
	P.motor	kW	37	45	55	55	75	75	75	75	45	55	75	75	90	90	90	110
	Lp (A)	s / c	94	96	97	99	99	100	100	101	93	96	98	100	101	101	102	103
	Lp (A)	c / c	73	75	76	79	79	79	79	80	73	76	76	79	80	80	81	82
500	Q.	m ³ /h	1778	2407	2911	3289	3667	4044	4422	4800	2317	3128	3777	4263	4750	5237	5723	6210
	Δ t	°C	54	51	49	48	48	47	47	47	57	52	49	48	47	47	47	47
	P. abs	kW	33.7	43.3	50.9	56.6	62.3	68.1	73.8	80	43.4	55.5	65.2	72.5	80	87	94	102
	P.motor	kW	45	55	75	75	75	90	90	110	55	75	90	90	110	110	110	132
	Lp (A)	s / c	95	98	99	100	101	101	102	102	95	98	100	102	103	104	104	105
	Lp (A)	c / c	74	78	79	79	80	80	81	81	75	76	79	81	82	82	82	83
600	Q.	m ³ /h	1728	2357	2861	3239	3617	3994	4372	4750	2236	3045	3692	4178	4663	5149	5634	6120
	Δ t	°C	69	64	61	59	58	57	56	56	72	64	61	60	59	59	59	58
	P. abs	kW	40.8	52.2	61.4	68.2	75	82	89	96	52.4	67.2	79	88	97	106	115	124
	P.motor	kW	55	75	75	90	90	110	110	110	75	90	90	110	132	132	132	160
	Lp (A)	s / c	96	99	100	101	102	102	103	103	96	100	101	103	104	105	105	106
	Lp (A)	c / c	75	79	79	80	81	81	82	82	76	79	80	82	82	83	83	84
700	Q.	m ³ /h	1700	2325	2825	3200	3575	3950	4325	4700								
	Δ t	°C	80	74	72	70	70	69	68	68								
	P. abs	kW	47.7	61.1	71.8	80	88	96	104	112								
	P.motor	kW	55	75	90	110	110	110	132	132								
	Lp (A)	s / c	97	99	101	102	102	103	103	103								
	Lp (A)	c / c	76	79	80	81	81	82	82	82								
800	Q.	m ³ /h	1650	2275	2775	3150	3525	3900	4275	4650								
	Δ t	°C	97	86	82	80	80	79	79	78								
	P. abs	kW	55	70.4	83	92	101	110	120	129								
	P.motor	kW	75	90	110	110	132	132	160	160								
	Lp (A)	s / c	98	100	102	103	103	104	104	104								
	Lp (A)	c / c	78	79	81	82	82	83	83	83								
900	Q.	m ³ /h																
	Δ t	°C																
	P. abs	kW																
	P.motor	kW																
	Lp (A)	s / c																
	Lp (A)	c / c																
1000	Q.	m ³ /h																
	Δ t	°C																
	P. abs	kW																
	P.motor	kW																
	Lp (A)	s / c																
	Lp (A)	c / c																

Composizione gas aspirato / Inlet gas composition : aria / air
 Pressione di aspirazione / Inlet pressure = P1 = 1013 ± 50 mbar
 Densità gas / Gas density : MfPc = 1.2 ± 0.1 Kg m³
 Temperatura di aspirazione / Inlet temperature : T1 = 20 °C ± 5 °C

Tolleranza relativa a portata e potenza assorbita /
 Tolerance referred to capacity and absorbed power: ± 5
 Rumorosità a 1m di distanza con tolleranza /
 Noise level at 1m distance with tolerance : ± 2 dB(A)
 Lp (A) = Rumorosità / Noise level; s/c = senza cabina / without enclosure;
 c/c = con cabina / with enclosure

TABELLA PRESTAZIONI

FUNZIONAMENTO IN COMPRESSIONE

PERFORMANCES TABLE

PRESSURE OPERATION



Δp mbar	Modello / Model		RL1650K / DN. 250								RL1750K / DN. 300							
	Motore r.p.m. motor	soffiante r.p.m. blower	1500								1500							
			800	1000	1150	1300	1450	1600	1700	1800	800	1000	1150	1300	1450	1600	1700	1800
200	Q.	m ³ /h	2385	3121	3673	4225	4777	5330	5698	6066	3746	4823	5631	6438	7246	8054	8592	9131
	Δ t	°C	23	21	20	20	20	20	19	19	26	20	19	19	19	19	18	17
	P. abs	kW	16.5	21.3	25	28.6	32.3	35.9	38.3	40.8	27.6	35	40.8	46.7	52.4	58	61.8	65.7
	P.motor	kW	22	30	30	37	45	45	45	55	37	37	55	55	75	75	75	75
	Lp (A)	s / c	91	92	93	94	96	96	97	97	94	95	96	97	98	98	99	99
	Lp (A)	c / c	76	76	78	79	80	80	80	80	79	79	80	80	80	80	80	81
300	Q.	m ³ /h	2281	3023	3579	4135	4691	5248	5619	5990	3619	4692	5496	6301	7105	7909	8446	8982
	Δ t	°C	31	29	28	27	27	27	26	26	34	28	27	27	27	27	26	25
	P. abs	kW	24.7	31.5	36.6	41.7	46.8	51.9	55.3	58.7	41.8	52.7	61	68.8	77.2	85	90.7	96.3
	P.motor	kW	30	37	45	55	55	75	75	75	55	75	75	90	90	110	132	132
	Lp (A)	s / c	92	93	93	95	97	98	98	99	95	96	97	98	99	99	100	101
	Lp (A)	c / c	76	78	78	79	80	80	81	81	79	80	80	80	81	81	82	82
400	Q.	m ³ /h	2132	2872	3428	3983	4539	5094	5465	5835	3458	4532	5338	6145	6951	7757	8294	8831
	Δ t	°C	46	40	36	36	38	37	37	36	47	39	38	37	37	37	36	36
	P. abs	kW	30.4	39.6	46.5	53.4	60.3	67.3	71.9	77	54.3	66.7	76	85.6	95	103.8	110	117
	P.motor	kW	37	55	55	75	75	90	90	90	75	90	90	110	132	132	132	160
	Lp (A)	s / c	94	95	95	97	98	99	99	100	97	98	99	100	101	102	102	103
	Lp (A)	c / c	79	79	79	80	80	81	81	82	80	80	81	82	82	83	83	84
500	Q.	m ³ /h	2063	2794	3342	3890	4438	4987	5352	5717	3346	4423	5231	6038	6846	7654	8192	8731
	Δ t	°C	53	48	47	47	46	46	46	46	50	49	48	47	47	46	46	45
	P. abs	kW	38.6	49.7	58.1	66.5	74.8	83	89	94	63	80	93	106	117,7	130,5	139	147
	P.motor	kW	55	75	75	90	90	110	110	110	90	110	110	132	160	160	160	200
	Lp (A)	s / c	96	97	97	98	99	100	101	101	98	99	100	102	103	103	104	104
	Lp (A)	c / c	79	80	80	81	81	82	83	83	80	81	82	83	84	84	85	85
600	Q.	m ³ /h	1989	2719	3266	3813	4362	4908	5273	5638	3293	4367	5172	5978	6783	7588	8125	8662
	Δ t	°C	68	59	58	58	57	57	57	56	62	61	58	57	56	56	56	54
	P. abs	kW	46.1	59.2	69	79	89	99	105	112	75	94	11,6	125,7	141,5	155	166	176
	P.motor	kW	55	75	90	90	110	132	132	132	90	110	132	160	200	200	200	250
	Lp (A)	s / c	97	98	99	100	101	102	103	104	100	101	102	103	104	105	105	106
	Lp (A)	c / c	80	81	81	82	83	83	84	86	82	82	84	84	85	86	86	87
700	Q.	m ³ /h	1913	2644	3192	3740	4288	4837	5202	5567	4293	5101	5908	6716	7524	8062	8601	
	Δ t	°C	80	71	70	70	69	69	68	68	71	70	68	68	67	66	65	
	P. abs	kW	53.5	68.5	80	91	102	114	121	129	116	131,8	144,5	165	177	188	199	
	P.motor	kW	75	90	110	110	132	132	160	160	132	160	200	200	250	250	250	
	Lp (A)	s / c	99	99	101	102	102	103	104	105	101	103	103	104	104	106	106	
	Lp (A)	c / c	81	81	83	83	83	85	86	86	82	84	85	87	87	88	88	
800	Q.	m ³ /h	1838	2569	3117	3665	4213	4762	5127	5492	4223	5031	5838	6646	7454	7992	8531	
	Δ t	°C	84	81	79	79	79	78	77	77	81	80	79	79	78	77	75	
	P. abs	kW	61.7	79	92	104	117	130	138	147	127,5	147	166	185	204	217	231	
	P.motor	kW	75	90	110	132	132	160	160	200	160	200	200	250	250	315	315	
	Lp (A)	s / c	100	101	102	102	103	104	104	105	102	104	104	105	105	106	106	
	Lp (A)	c / c	82	83	83	83	85	86	86	86	85	86	86	87	87	88	88	
900	Q.	m ³ /h		2494	3042	3590	4139	4687	5052	5417								
	Δ t	°C		91	91	89	87	85	85	84								
	P. abs	kW		88	103	117	131	146	155	165								
	P.motor	kW		110	132	132	160	200	200	200								
	Lp (A)	s / c		101	103	103	104	104	104	104								
	Lp (A)	c / c		83	85	85	86	86	86	86								
1000	Q.	m ³ /h			2962	3505	4049	4593	4956	5319								
	Δ t	°C			101	98	97	96	96	96								
	P. abs	kW			114	129	145	161	172	182								
	P.motor	kW			132	160	200	200	200	250								
	Lp (A)	s / c			104	104	105	105	105	105								
	Lp (A)	c / c			86	86	87	87	87	87								

Composizione gas aspirato / Inlet gas composition : aria / air
 Pressione di aspirazione / Inlet pressure = P1 = 1013 ± 50 mbar
 Densità gas / Gas density : MfPc = 1.2 ± 0.1 Kg m³
 Temperatura di aspirazione / Inlet temperature : T1 = 20 °C ± 5 °C

Tolleranza relativa a portata e potenza assorbita /
 Tolerance referred to capacity and absorbed power: ± 5
 Rumorosità a 1m di distanza con tolleranza /
 Noise level at 1m distance with tolerance : ± 2 dB(A)
 Lp (A) = Rumorosità / Noise level; s/c = senza cabina / without enclosure;
 c/c = con cabina / with enclosure

TABELLA PRESTAZIONI

FUNZIONAMENTO IN COMPRESSIONE

PERFORMANCES TABLE

PRESSURE OPERATION

RL



Δp mbar	Modello / Model		RL1800K / DN. 300				RL1900K / DN. 300				RL2100K / DN. 300			
	Motore r.p.m. motor	soffiante r.p.m. blower	1500				1500				1500			
200	Q.	m ³ /h	4900	7300	9645	11695	4154	6190	7819	9854	6494	9580	12049	15134
	Δ t	°C	18	17	17	17	18	17	16	15	21	19	18	18
	P. abs	kW	32	46	61	71	28.6	41.2	51.3	64	44.2	62.6	77	96
	P.motor	kW	37	55	75	90	37	55	75	75	55	75	90	110
	Lp (A)	s / c	92	93	95	96	91	94	96	98	94	96	100	102
	Lp (A)	c / c	76	77	78	79	80	82	83	84	82	83	84	85
	300	Q.	m ³ /h	4725	7110	9450	11505	4086	6100	7711	9726	6314	9400	11869
Δ t		°C	28	26	25	25	28	27	26	25	35	32	29	28
P. abs		kW	49	69	88	107	42.1	58.9	72.4	89.2	62.6	90	112	140
P.motor		kW	55	90	110	132	55	75	90	110	75	110	132	160
Lp (A)		s / c	94	96	97	98	92	95	97	99	96	99	101	103
Lp (A)		c / c	77	79	79	80	81	83	84	85	81	84	84	86
400		Q.	m ³ /h	4570	6950	9375	11350	3914	5950	7579	9614	6134	9220	11689
	Δ t	°C	39	36	36	35	39	37	36	34	47	45	42	38
	P. abs	kW	64	91	118	142	56	78	96	118	84	118	145	179
	P.motor	kW	75	110	132	160	75	90	110	132	110	132	200	250
	Lp (A)	s / c	96	98	100	101	94	96	98	101	97	97	102	103
	Lp (A)	c / c	79	80	81	81	82	83	84	86	83	83	84	86
	500	Q.	m ³ /h	4405	6760	9150	11155	3794	5830	7459	9494	5954	9040	11509
Δ t		°C	49	46	45	44	50	47	47	42	63	49	48	46
P. abs		kW	80	114	149	179	67	96	118	147	105	147	181	223
P.motor		kW	90	132	200	200	90	110	160	200	132	200	250	250
Lp (A)		s / c	97	100	102	103	95	97	101	103	99	100	103	104
Lp (A)		c / c	79	81	82	83	83	84	86	87	84	84	86	86
600		Q.	m ³ /h	4250	6630	8985	11010	3726	5740	7351	9366	5774	8860	11329
	Δ t	°C	60	57	55	54	63	58	57	57	72	60	58	57
	P. abs	kW	96	137	180	214	81	115	142	175	127	177	217	267
	P.motor	kW	110	160	200	250	110	132	160	200	160	200	250	315
	Lp (A)	s / c	99	101	103	104	96	98	102	104	99	101	104	105
	Lp (A)	c / c	81	81	83	84	83	84	86	86	84	84	86	86
	700	Q.	m ³ /h					3620	5653	7280	9313	5594	8680	11149
Δ t		°C					75	70	67	67	85	78	68	67
P. abs		kW					94	134	165	204	145	204	252	311
P.motor		kW					110	160	200	250	200	250	315	355
Lp (A)		s / c					96	98	103	104	99	102	104	105
Lp (A)		c / c					83	84	86	87	84	84	86	86
800		Q.	m ³ /h					3480	5547	7200	9267	5491	8545	10988
	Δ t	°C					85	81	79	77	102	93	80	76
	P. abs	kW					112	156	191	236	164	232	287	355
	P.motor	kW					132	200	250	315	200	315	355	400
	Lp (A)	s / c					97	99	103	104	100	103	105	107
	Lp (A)	c / c					84	84	86	87	84	84	86	87
	900	Q.	m ³ /h					5473	7100	9133				
Δ t		°C					92	89	87					
P. abs		kW					173	212	233					
P.motor		kW					200	250	315					
Lp (A)		s / c					100	104	105					
Lp (A)		c / c					85	87	87					
1000		Q.	m ³ /h					5400	7000	9000				
	Δ t	°C					104	98	97					
	P. abs	kW					190	235	299					
	P.motor	kW					250	315	400					
	Lp (A)	s / c					100	104	105					
	Lp (A)	c / c					85	87	87					

Composizione gas aspirato / Inlet gas composition : aria / air
 Pressione di aspirazione / Inlet pressure = P1 = 1013 ± 50 mbar
 Densità gas / Gas density : MfPc = 1.2 ± 0.1 Kg m³
 Temperatura di aspirazione / Inlet temperature : T1 = 20 °C ± 5 °C

Tolleranza relativa a portata e potenza assorbita /
 Tolerance referred to capacity and absorbed power: ± 5
 Rumorosità a 1m di distanza con tolleranza /
 Noise level at 1m distance with tolerance : ± 2 dB(A)
 Lp (A) = Rumorosità / Noise level; s/c = senza cabina / without enclosure;
 c/c = con cabina / with enclosure

TABELLA PRESTAZIONI

FUNZIONAMENTO IN COMPRESSIONE

PERFORMANCES TABLE

PRESSURE OPERATION



Δp mbar	Modello / Model		RL2125K / DN. 400				RL2200K / DN. 500				RL2250K / DN. 600			
	Motore r.p.m. motor	soffiante r.p.m. blower	1500				1500				1500			
200	Q.	m ³ /h	9167	13583	17117	21533	6725	9725	11975	14225	10600	15320	18860	22400
	Δ t	°C	20	20	18	17	20	19	19	17	19	17	17	17
	P. abs	kW	62	87	108	134	53	71.9	86	100	70.7	99	120	141
	P.motor	kW	75	110	132	160	75	90	110	132	90	132	160	160
	Lp (A)	s / c	95	97	100	103	95	96	101	103	98	101	102	105
	Lp (A)	c / c	82	83	84	86	82	82	83	86	83	84	85	86
300	Q.	m ³ /h	8867	13283	16817	21233	6500	9470	11698	13925	10350	15050	18575	22100
	Δ t	°C	30	28	28	27	31	29	29	27	31	27	27	27
	P. abs	kW	93	131	162	201	70.7	97	116	136	103	144	175	206
	P.motor	kW	110	160	200	250	90	132	132	160	132	160	200	250
	Lp (A)	s / c	97	99	102	104	97	100	102	104	99	102	104	107
	Lp (A)	c / c	83	84	86	86	83	83	84	86	83	85	86	87
400	Q.	m ³ /h	8650	13025	16525	20900	6275	9245	11473	13700	10100	14820	18360	21900
	Δ t	°C	42	40	39	38	41	39	39	39	43	38	37	37
	P. abs	kW	123	175	216	268	94	127	152	177	136	190	230	271
	P.motor	kW	160	200	250	315	110	160	200	200	200	250	315	315
	Lp (A)	s / c	98	99	103	106	97	100	103	105	99	102	105	107
	Lp (A)	c / c	84	84	86	87	83	83	84	86	83	85	86	87
500	Q.	m ³ /h	8350	12725	16225	20600	6125	9095	11323	13550	9800	14520	18060	21600
	Δ t	°C	54	51	47	46	53	49	49	48	57	49	48	47
	P. abs	kW	154	219	270	334	118	158	188	218	171	237	286	336
	P.motor	kW	200	250	315	400	132	200	250	250	200	315	355	400
	Lp (A)	s / c	100	100	104	106	98	101	103	105	100	102	106	108
	Lp (A)	c / c	84	84	86	87	83	83	84	86	83	85	86	87
600	Q.	m ³ /h	8150	12525	16025	20400	5975	8960	11198	13437	9600	14340	17895	21450
	Δ t	°C	62	59	57	56	63	59	59	60	71	61	59	57
	P. abs	kW	185	262	324	401	136	185	222	259	206	283	340	398
	P.motor	kW	250	315	400	450	160	250	250	315	250	355	400	450
	Lp (A)	s / c	101	102	104	107	98	101	103	106	101	104	107	108
	Lp (A)	c / c	85	86	86	87	83	83	84	86	84	85	87	87
700	Q.	m ³ /h					5900	8870	11098	13325				
	Δ t	°C					77	69	69	68				
	P. abs	kW					153	212	256	300				
	P.motor	kW					200	250	315	355				
	Lp (A)	s / c					99	102	103	106				
	Lp (A)	c / c					83	83	84	86				
800	Q.	m ³ /h					5750	8720	10948	13175				
	Δ t	°C					91	81	79	79				
	P. abs	kW					177	243	292	341				
	P.motor	kW					200	315	355	400				
	Lp (A)	s / c					99	102	103	106				
	Lp (A)	c / c					83	83	84	86				
900	Q.	m ³ /h					5637	8622	10861	13100				
	Δ t	°C					103	91	89	88				
	P. abs	kW					200	273	328	382				
	P.motor	kW					250	315	400	450				
	Lp (A)	s / c					100	103	103	107				
	Lp (A)	c / c					83	84	84	86				
1000	Q.	m ³ /h					8495	10723	12950					
	Δ t	°C					103	101	100					
	P. abs	kW					306	370	438					
	P.motor	kW					355	450	500					
	Lp (A)	s / c					104	105	107					
	Lp (A)	c / c					85	85	87					

Composizione gas aspirato / Inlet gas composition : aria / air
 Pressione di aspirazione / Inlet pressure = P1 = 1013 ± 50 mbar
 Densità gas / Gas density : MfPc = 1.2 ± 0.1 Kg m³
 Temperatura di aspirazione / Inlet temperature : T1 = 20 °C ± 5 °C

Tolleranza relativa a portata e potenza assorbita /
 Tolerance referred to capacity and absorbed power: ± 5
 Rumorosità a 1m di distanza con tolleranza /
 Noise level at 1m distance with tolerance : ± 2 dB(A)
 Lp (A) = Rumorosità / Noise level; s/c = senza cabina / without enclosure;
 c/c = con cabina / with enclosure