



I Application

Prolac HP is a sanitary centrifugal pump that meets the highest hygienic requirements and it can be used in the applications of the food processing and pharmaceutical industries. It is designed to operate under high pressures at the suction side of the pump, for example, in systems of filtration or reverse osmosis. Due to the design, the working pressure can reach 40 bars.

I Operating principle

The impeller consists of a definite number of vanes according to the model of the pump, housed inside the pump casing it rotates together with the shaft of the pump. Due to this assembly, the impeller transfers energy to the medium in form of kinetic and pressure energy. The pump is not reversible by a simple reversal of the direction of rotation. The direction of rotation is clockwise when the pump is viewed from the rear part of the motor.

I Design and features

- One-piece machined pump casing.*
- Pump casing fixed with screws.*
- DIN connections (standard).*
- Impeller: open or semi-open according to the size.*
- Special hygienic balanced mechanical seal designed to work under high pressures.*
- Robust stainless steel lantern.*
- Motors IEC B35 with heavy-duty bearings, IP55, F-class insulation.*



I Materials

- | | |
|---|------------------------------------|
| <i>Parts in contact with the media:</i> | <i>AISI 316L</i> |
| <i>Other parts:</i> | <i>AISI 304</i> |
| <i>Gaskets (standard):</i> | <i>EPDM in compliance with FDA</i> |
| <i>Mechanical seal (standard):</i> | <i>SiC/C/EPDM</i> |
| <i>Internal surface finish:</i> | <i>Ra < 0,8µm</i> |
| <i>External surface finish:</i> | <i>mirror polished</i> |



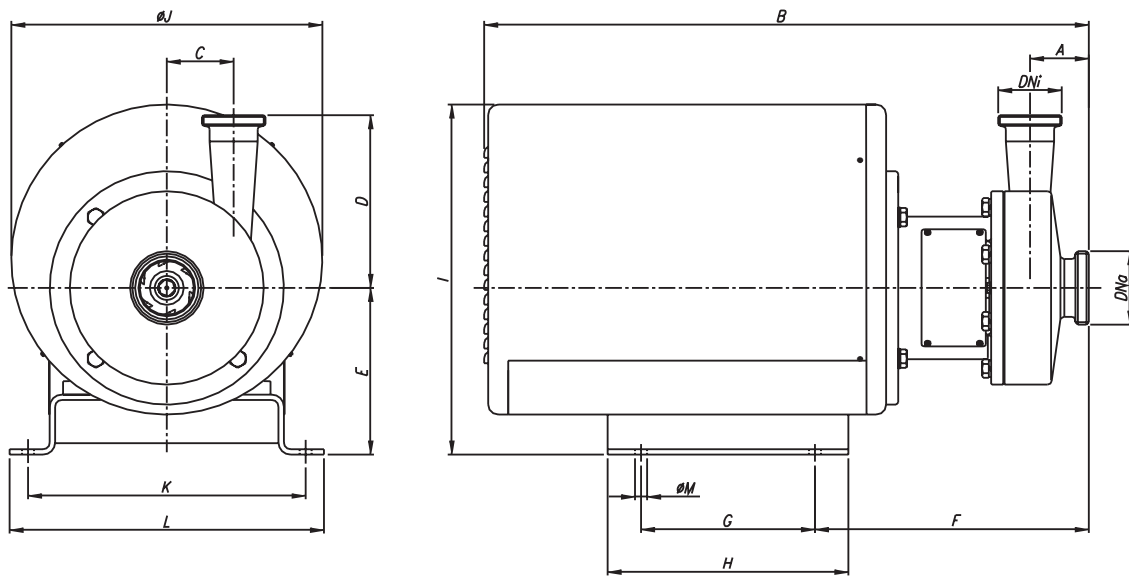
I Options

Motor with/without shroud.
 Connections: Clamp, SMS, RJT.
 Other motor protections.
 Gaskets: FPM or PTFE.
 Quench.

I Technical specifications (50Hz)

Max. flow	160 m ³ /h	704 US GPM
Max. differential head	55 m	197 ft
Max. working pressure	40 bar	580 PSI
Max. working temperature*	120 °C	248 °F
Max. speed	3000 rpm	

* EPDM gaskets (standard).



SIZE	MOTOR	DNa	DNi	A	B	C	D	E	F	G	H	I	∅ J	K	L	∅ M	
S-26 HP	D	100	65	50	76	600	79	239	170	140	185	355	330	265	295	13	
	E	112															
S-35 HP	F	132	65	50	84	740	101	284	192	358	170	220	410	380	310	350	13
S-37 HP	G	160	80	65	88	905	100	259	250	410	260	360	525	465	415	470	18
S-38 HP	G	160	100	80	115	930	107	365	250	458	260	360	505	465	415	470	18
	H	180															
	J	200															
						1105			340	460	305	400	690	650	545	600	23



The information contained in this brochure is for guidance only. We reserve the right to modify any material or feature without notice in advance.
 For further information, please, consult our web site. www.inoxpa.com



FT/PROLAC HP-1-EN-0707